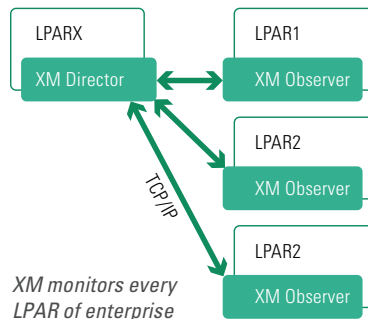


# XM4DB2™

## EXCEPTION MASTER FOR DB2 SYSTEMS



### Detect Problems Before Your Users Do

XM4DB2 continuously inspects each mission critical DB2 system. It proactively looks for indicators for current or potential future problems, so called "exceptions". An exception is an unacceptable situation that DB2 or another z/OS component cannot automatically solve. XM4DB2 alerts DBA staff and optionally can take action to rectify the situation. Working in the background it continually checks for availability of DB2 objects and the operational readiness of utilities, plans and packages.

Here are some examples of where XM4DB2 detects and signals severe problems. A load utility puts a tablespace into a "RECP" state and abends leaving the tablespace in a very undesired restricted state. The consequence is a plan or a package (an application) will fail.

XM4DB2 immediately alerts the responsible DBA and can take corrective actions. It links the required information and presents the "whole story", the utility that failed, the affected objects and the afflicted application. XM4DB2 not only detects problems but first and foremost it anticipates any upcoming problems. XM4DB2 reports timely an impending space

shortage for table or indexspaces. Another example is in the area of recoverability. XM checks image-copies (the underlying datasets) and calculates the time to recover to ensure that service levels are satisfied. Database administrators will receive a message if XM4DB2 calculates that the expected recovery time is longer than allowed under service levels agreements. A decrease in IO performance can become an ugly problem in peak load times.

XM4DB2 continuously monitors the IO behavior and bufferpool performance. It detects problems and tuning opportunities and signals any critical developments. XM4DB2 interfaces with the BPA4DB2 graphical workstation giving in-depth analysis and tuning guidance. XM4DB2 maintains and displays a table of current exceptions across the DB2 subsystems and enterprise-wide. Each event is highlighted only once – the entry disappears when the problem is fixed. On urgent matters the system notifies the database and system administrators. There is a function with the option to automatically resolve "standard" issues. Some of the exceptions that are continuously checked include:

- Objects in an unexpected restricted state and all its affected plans/packages
- Foreseeable lack of space of objects whether attributable to z/OS, ICF or DB2
- Unrecoverable tablespaces due to missing image-copies

### Benefits

- Delivers smart analysis and recommendations for problem avoidance
- Pro-active surveillance of each DB2 system
- Reduces denial of access on production databases
- Reduces operational risks
- Reduces manual efforts and keystroke errors through automation
- Ensures non-stop operations
- Increased productivity across the business
- Fills the void in System Management tools market and IT Services



## XM4DB2™ – EXCEPTION MASTER FOR DB2 SYSTEMS

» *Single Point of Control – enterprise-wide.* «

- Possible infringement of SLAs with regard to recovery time
- Missing Archived Logs; inconsistency with BSDS
- Stopped Procedures e.g. REJECT or QUEUE with queue length reached
- Stopped Utilities and affected objects
- In-doubt Threads and related system implications
- DDF status with regard to connections and threads
- Plans/packages that are invalid or inoperative or impacted by other failures
- Buffer pool related problems, e.g. avoidable re-reads, thresholds hit, etc.
- Unexpected load peaks in respect of Getpage and CPU consumption.

### Features

- *Unique detect and correct technology*
- *Predefined exception handling*
- *Customizable analysis modules*
- *Local measurement and analysis*
- *Central display and control*
- *History function for analysis and charting*
- *Holistic approach: Objects, utilities, plans, packages, dynamic SQL, ...*
- *Ongoing and automatic performance monitoring*
- *Email alerts*

### Cope with the Raw Data Overload

DB2 systems continuously change. Activities invoke DB2 messages with information on events, warnings about restrictions and error messages on probable pitfalls. A dedicated effort is necessary to view and extract from the flood of messages those which are relevant. Simply scanning for particular messages or analyzing the output of display commands is not enough. Early recognition of costly disruptions requires that the DBA evaluate different sources of information and reach timely conclusions. An automated and proactive supervision prevents emergencies and ensures continuous database availability.



### Raw data or information – What serves you best?

Multiple monitoring programs for DB2 and z/OS deliver great raw statistics. Unfortunately, they all lack the ability to intelligently review the observations to determine when a true exception or error situation is about to happen. The primary purpose of these monitoring tools is to make data available to the experts analyzing DB2 system failures. The UBS approach is to keep avoidable problems from impacting the company in the first place by automatically tracking suspicious and potentially harmful events in real time.

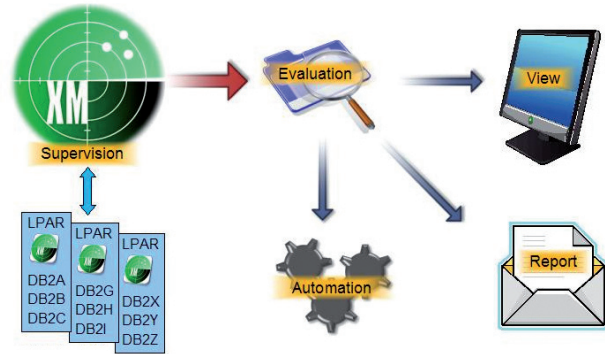
XM4DB2 is for Operations and Production DBA staff. It delivers a timely pro-active status update of the DB2 systems to improve and guarantee availability of all objects to their dependent applications.

XM4DB2 offers predefined best practices solutions and also supports customized exception definitions. An exception that repeatedly leads to a particular error, and seems in the short term to be unavoidable, should receive a standard treatment. XM4DB2 offers prepared jobs for repair and other functions. These jobs can be checked, edited and released by the staff or submitted to a scheduler for execution.

XM4DB2 is designed to easily accept new defined actions. Defined actions or a described set of events are treated as an exception. They are continuously tracked and generate alerts.



# XM4DB2™ – EXCEPTION MASTER FOR DB2 SYSTEMS

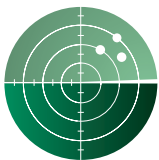


Surprise – Detect – Evaluate – Report

## Why XM4DB2?

There are hundreds of messages and warnings on over 30+ possible restricted states. With just two DB2 systems using potentially thousands of tablespaces it is near impossible to manually observe and detect problems, with 10 or say 100 subsystems it's definitely in the realm of the impossible.

It requires a dedicated program to unerringly find the events within DB2 and z/OS that are causing problems. With the naked eye it's impossible to see what is going on and to gauge possible consequences. XM4DB2 tackles the non-stop supervision of the DB2 environment with its unique functionality and technology. Beyond saving time, effort and staff resources, it helps to keep mission critical applications running smoothly. How much does each minute of DB2 downtime cost your organization?



## The DB2 High-End Product Line:

### BCV4™

Full DB2 Subsystem Clones in minutes versus days

### BCV5™

Save 90% CPU & Run Time with each DB2 copy

### BCV6™

Log enhanced copies for 24x7 DB2 refresh/migration

### BPA4DB2™

Premier advisor for DB2 buffer pool optimization

### ULT4DB2™

Easily identify & restore unwanted changes of DB2 data

### TUC4DB2™

RTS & Policy driven automation of DB2 data maintenance

### XM4DB2™

Pro-active surveillance for a greater DB2 availability

## Contact Us For More Information

We offer a free 30-day trial evaluation as well as private web demo. Learn more about XM4DB2 and our complete line of DB2 z/OS products at:

DISTRIBUTED IN THE US & CANADA BY



Tel.: 1-866-GO-4-ESAI  
 sales@ESAIGroup.com  
 www.ESAIGroup.com

